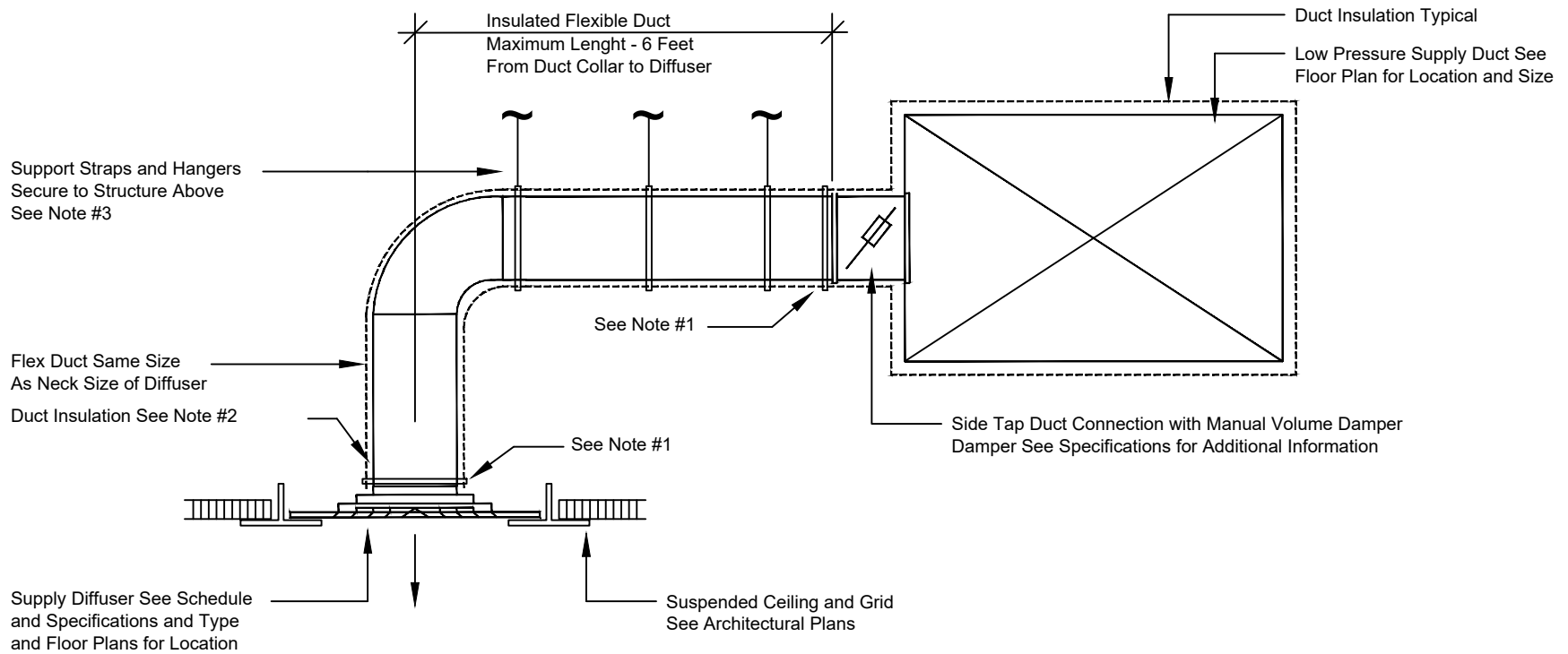


Detail : Diffuser With Hard Duct & Flexible Duct Connections

No Scale

Notes :

1. Provide Ties or Stainless Steel Clamps to Secure the Insulation.
2. Seal the End of the Insulation with a Vapor Barrier Mastic.
3. Provide Supports to Keep the Flexible Duct from Sagging as follows:
 2 foot to 4 foot Length - Minimum 2 Hangers.
 6 foot Length - Minimum 3 Hangers.

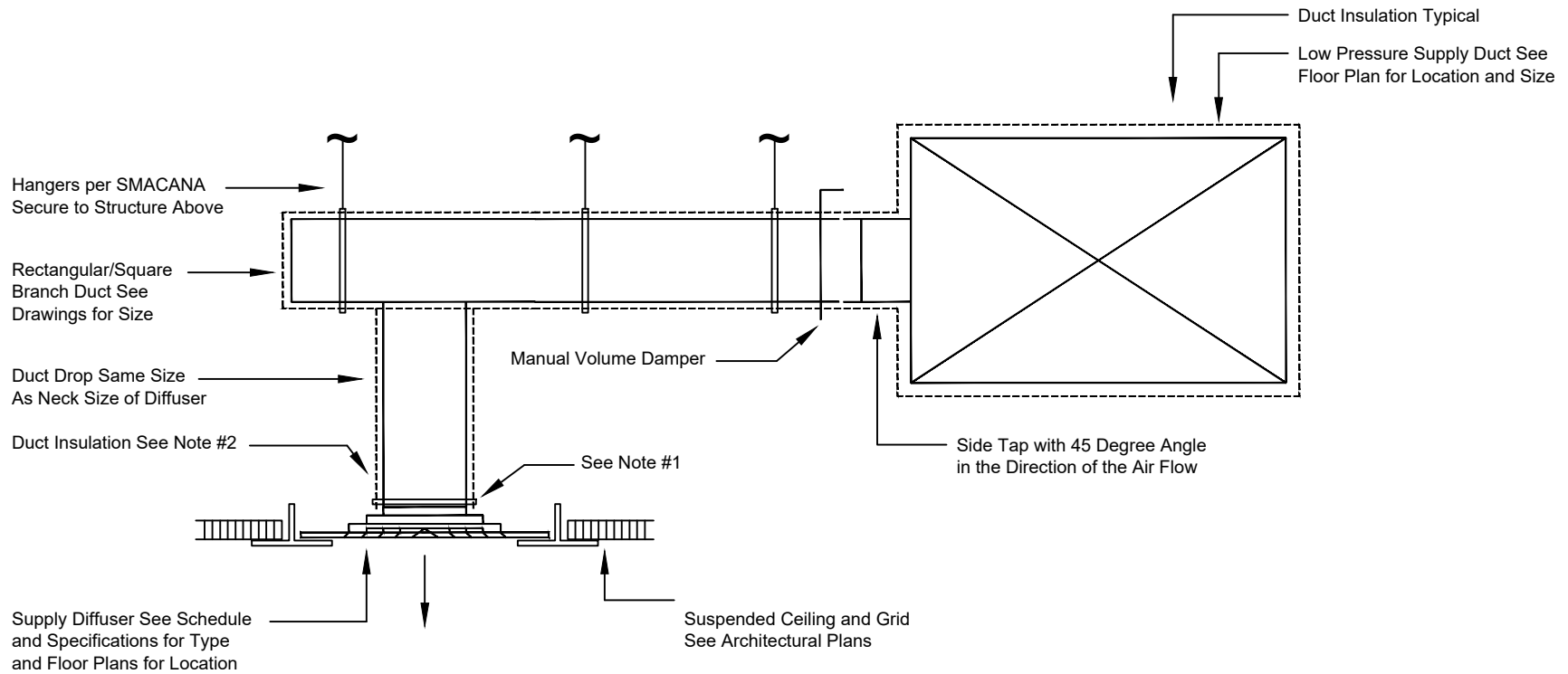


Detail : Diffuser With Flexible Duct Connection

No Scale

Notes :

1. Provide Ties or Stainless Steel Clamps to Secure the Insulation.
2. Seal the End of the Insulation with a Vapor Barrier Mastic.
3. Provide Supports to Keep the Flexible Duct from Sagging as follows:
 2 foot to 4 foot Length - Minimum 2 Hangers.
 6 foot Length - Minimum 3 Hangers.

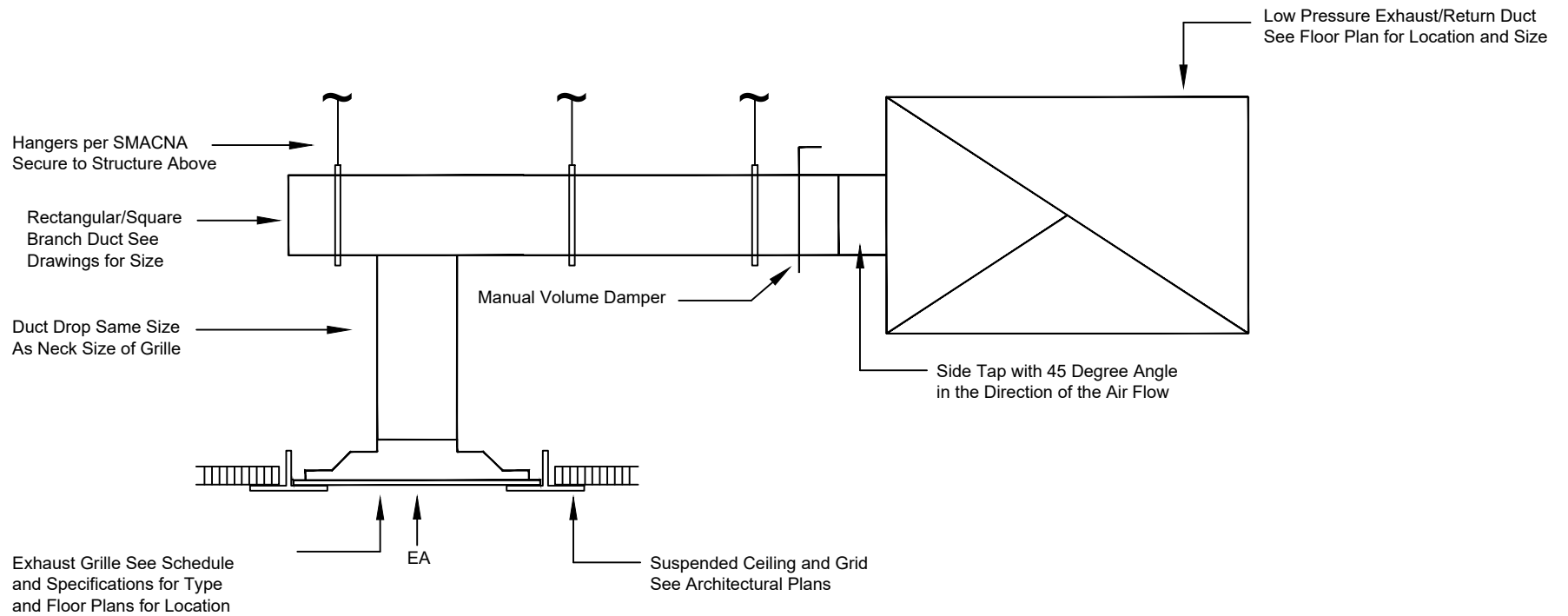


Detail : Diffuser With Hard Duct Connection

No Scale

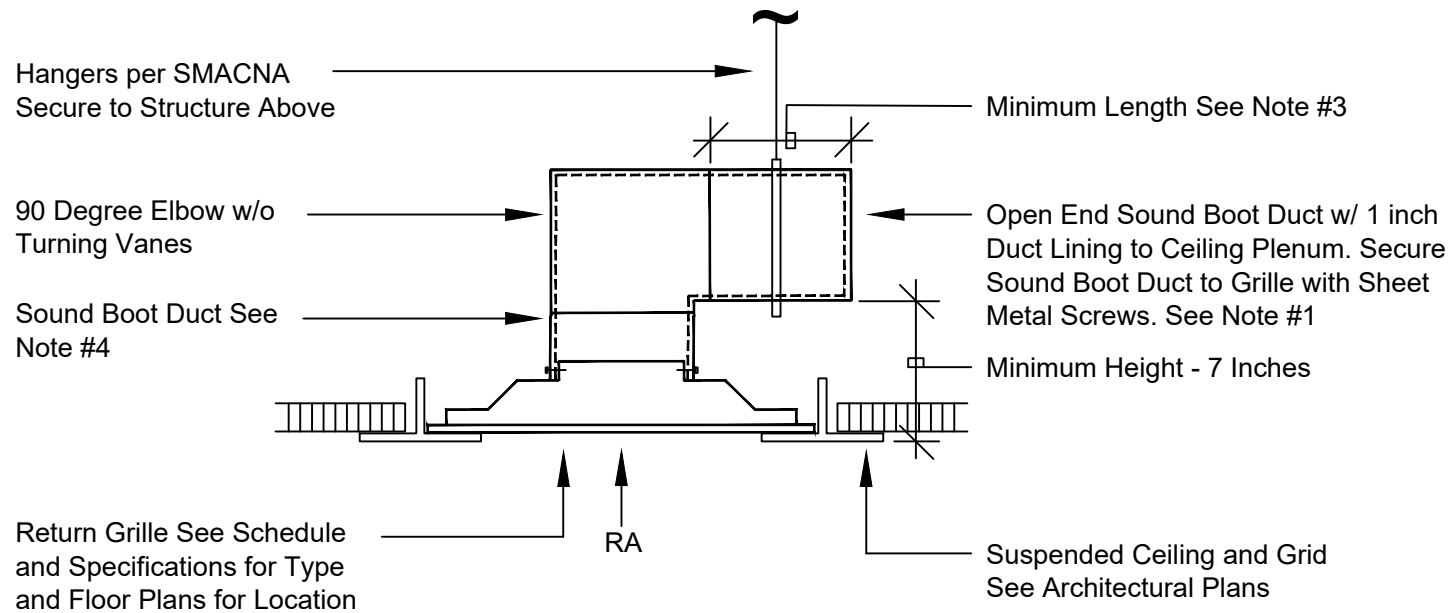
Notes :

1. Provide Ties or Stainless Steel Clamps to Secure the Insulation.
2. Seal the End of the Insulation with a Vapor Barrier Mastic.



Detail : Exhaust Grille - Hard Duct Connection

No Scale

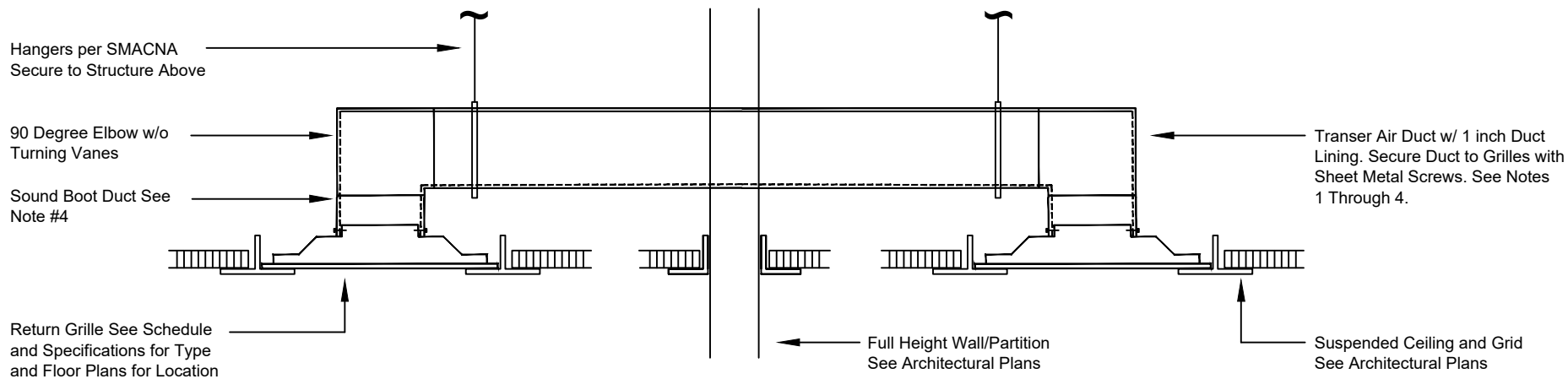


Detail : Return Grille - Ceiling Plenum

No Scale

Notes :

1. For Return Air Volumes up to 450 CFM Use a Grille with a 12" x 12" Neck Size.
2. For Return Air Volumes Greater Than 450 CFM use a Grille with a Larger Neck Size See Plans Sizes and Locations and Sound Boot Sizes.
3. The Minimum Length of the Horizontal Sound Boot Duct shall be equal to the Interior Clear Height of the Lined Duct Sound Boot.
4. The Lined Sound Boot shall have a Free Area Equal to the Neck Size of the Grille.
5. Where Return Grilles are used with Fan Powered Boxes Provide Filters at each Grille Location. See Specs for Filter Media Requirements.



Detail : Transfer Duct and Grilles

No Scale

Notes :

1. For Transfer Air Volumes up to 450 CFM Use a Grille with a 12" x 12" Neck Size.
2. For Transfer Air Volumes Greater Than 450 CFM use a Grille with a Larger Neck Size.
3. The Lined Duct shall have a Free Area Equal to the Neck Size of the Grille
4. See Floor Plans Locations and Size of Transfer Grilles and Ducts.